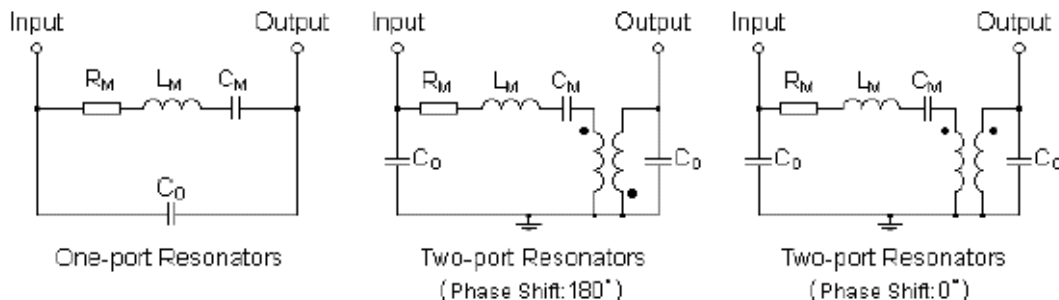


APPLICATION REFERENCE

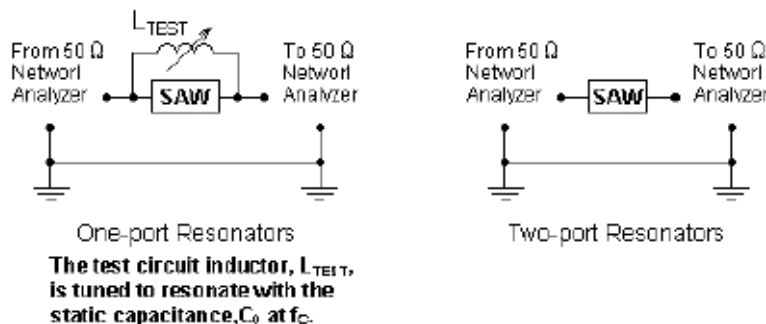
EQUIVALENT LC MODEL

The following equivalent LC model for SAW resonators is valid near resonance.



TYPICAL TEST CIRCUIT

- Typical Test Circuit for SAW Resonators



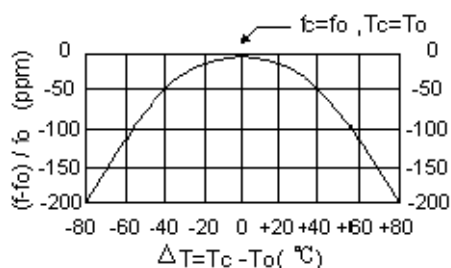
- Typical Test Circuit for SAW Filters

The test or matching circuit for SAW filters varies with the type and center frequency of SAW component.

TEMPERATURE CHARACTERISTICS

Temperature Characteristics:

The curve shown on the right accounts for resonator contribution only and does not include oscillator temperature characteristics.



In keeping with our ongoing policy of product evolution and improvement, specifications are subject to change without notice.

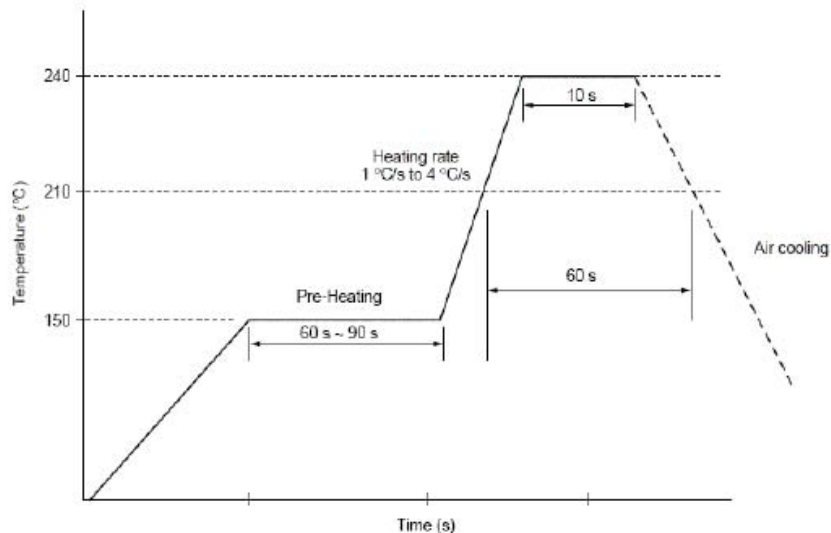
ISO9001: 2000 Registered - Registration number 6830/2

For quotations or further information please contact us at:

3 The Business Centre, Molly Millars Lane, Wokingham, Berks, RG41 2EY, UK

<http://www.actcrystals.com>

RECOMMENDED REFLOW PROFILE

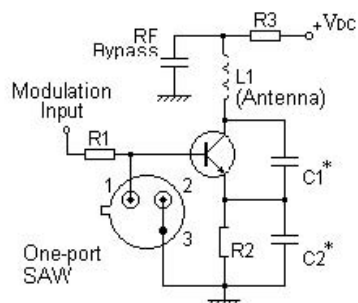


TYPICAL APPLICATION CIRCUITS

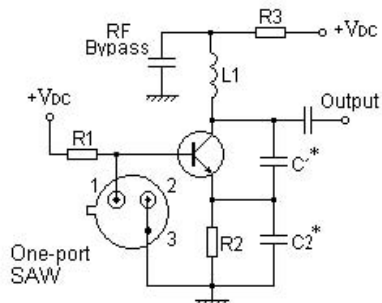
- One-port SAW Resonators

The following circuits are suitable for one-port SAW resonators, e.g. in TO-39 package.

Typical Low-power Transmitter Application



Typical Local Oscillator Application



In keeping with our ongoing policy of product evolution and improvement, specifications are subject to change without notice.

ISO9001: 2000 Registered - Registration number 6830/2

For quotations or further information please contact us at:

3 The Business Centre, Molly Millars Lane, Wokingham, Berks, RG41 2EY, UK

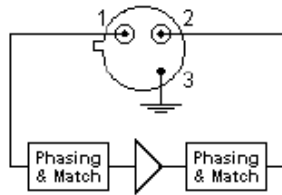
<http://www.actcrystals.com>

- Two-port SAW Resonators

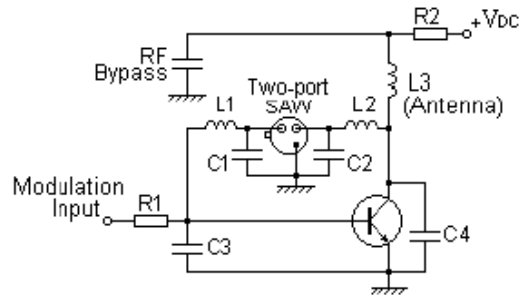
The two-port resonators can be used in oscillator or transmitter designs that require 180° or 0° phase shift resonance in a two-port configuration. One-port resonators can be simulated, as shown below, by connecting terminal and output terminal together.

The following circuits are suitable for two-port SAW resonators, e.g. in TO-39 package.

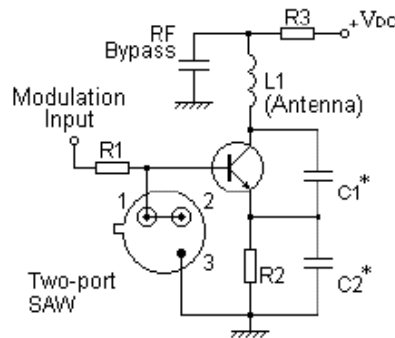
Conventional Two-port Design



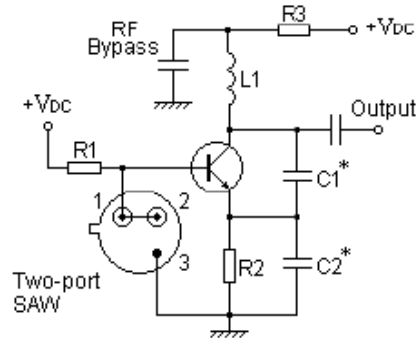
Typical Low-power Transmitter Application
(Two-port Design)



Typical Low-power Transmitter Application
(Simulating One-port Design)



Typical Local Oscillator Application
(Simulating One-port Design)



SMD Production Line

In keeping with our ongoing policy of product evolution and improvement, specifications are subject to change without notice.

ISO9001: 2000 Registered - Registration number 6830/2

For quotations or further information please contact us at:

3 The Business Centre, Molly Millars Lane, Wokingham, Berks, RG41 2EY, UK

<http://www.actcrystals.com>